



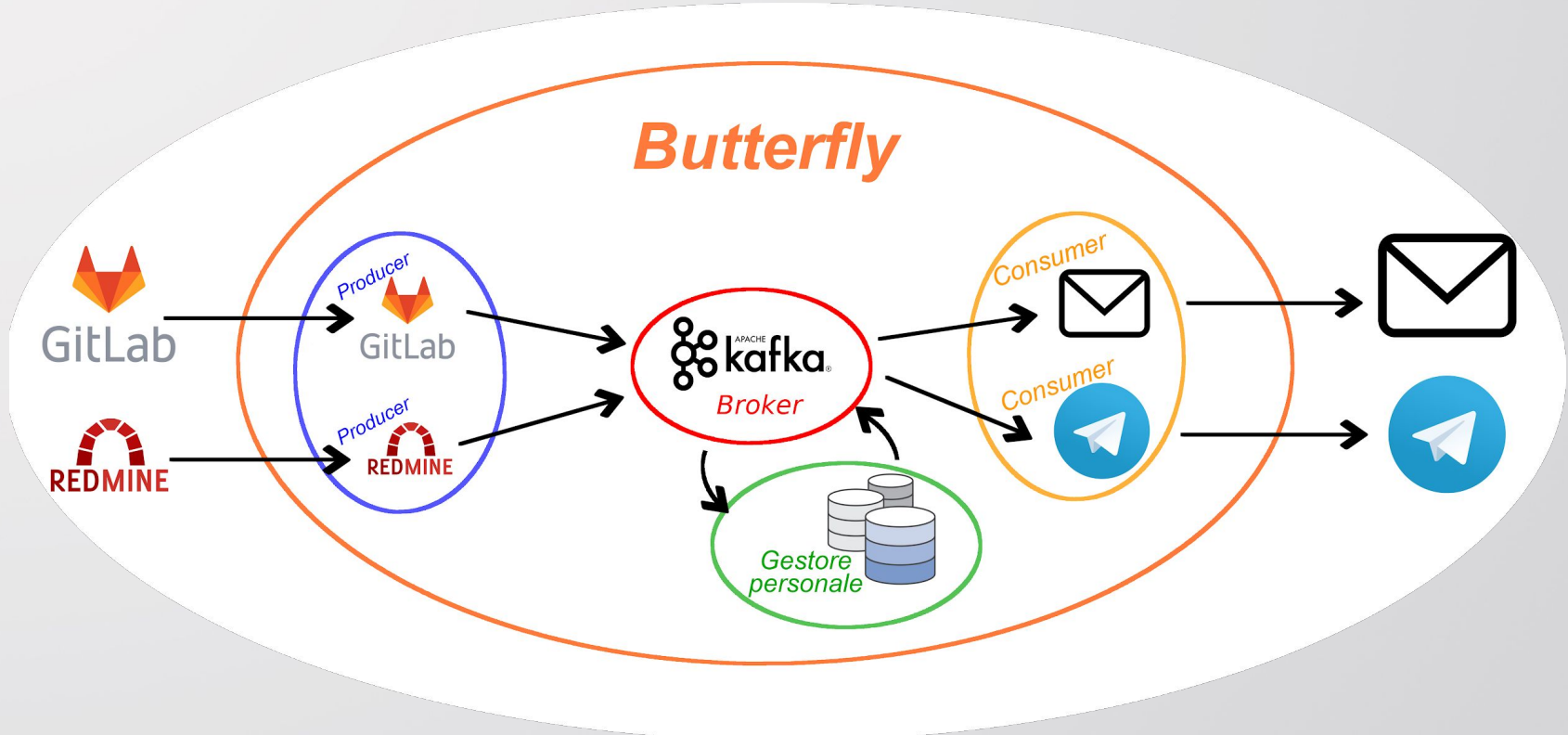
Product
Baseline

Butterfly

Università degli Studi di Padova

02 / 04 / 2019

Butterfly in generale





Linguaggi e librerie



Python

- Flask
- KafkaPython
- Telepot
- SMTPLib
- PyMongo

Producer, Consumer, Gestore personale

HTML + CSS + JS

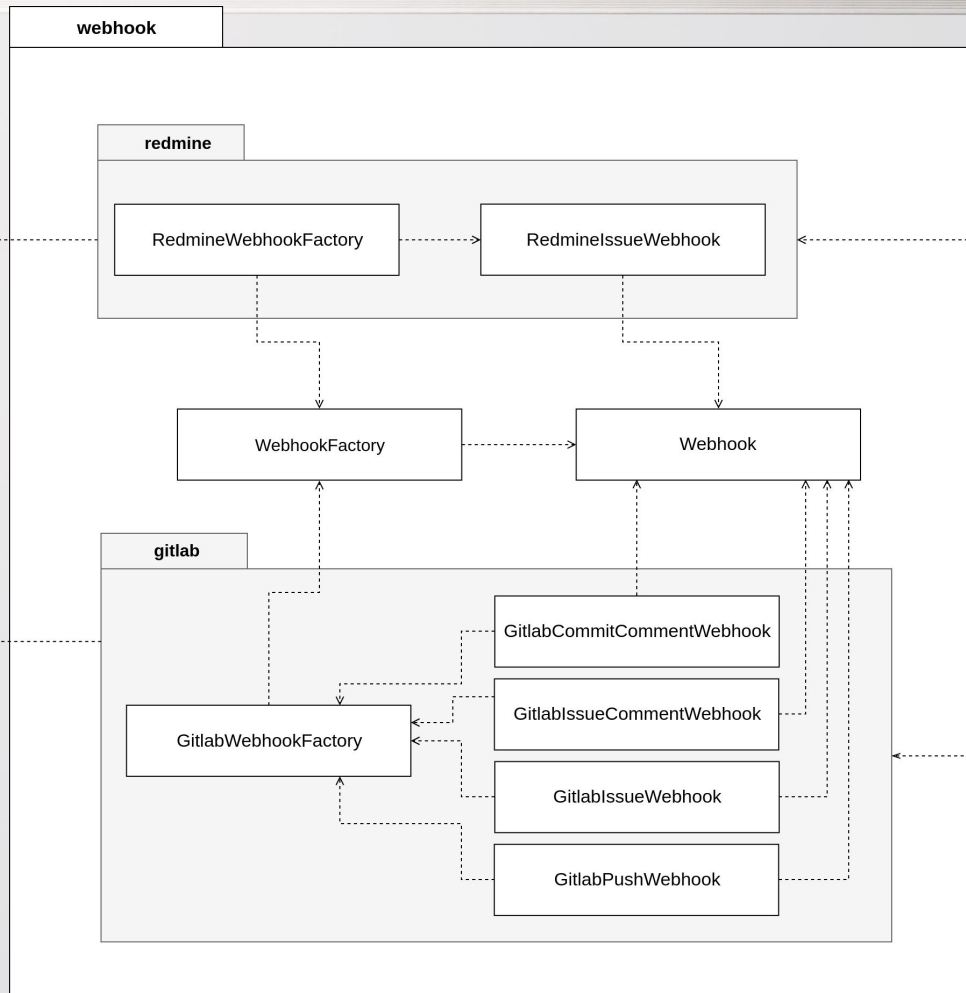
Gestore Personale





PRODUCER

Diagramma
Package



Producer
Redmine

Producer
GitLab



PRODUCER

Webhook
Redmine

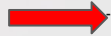
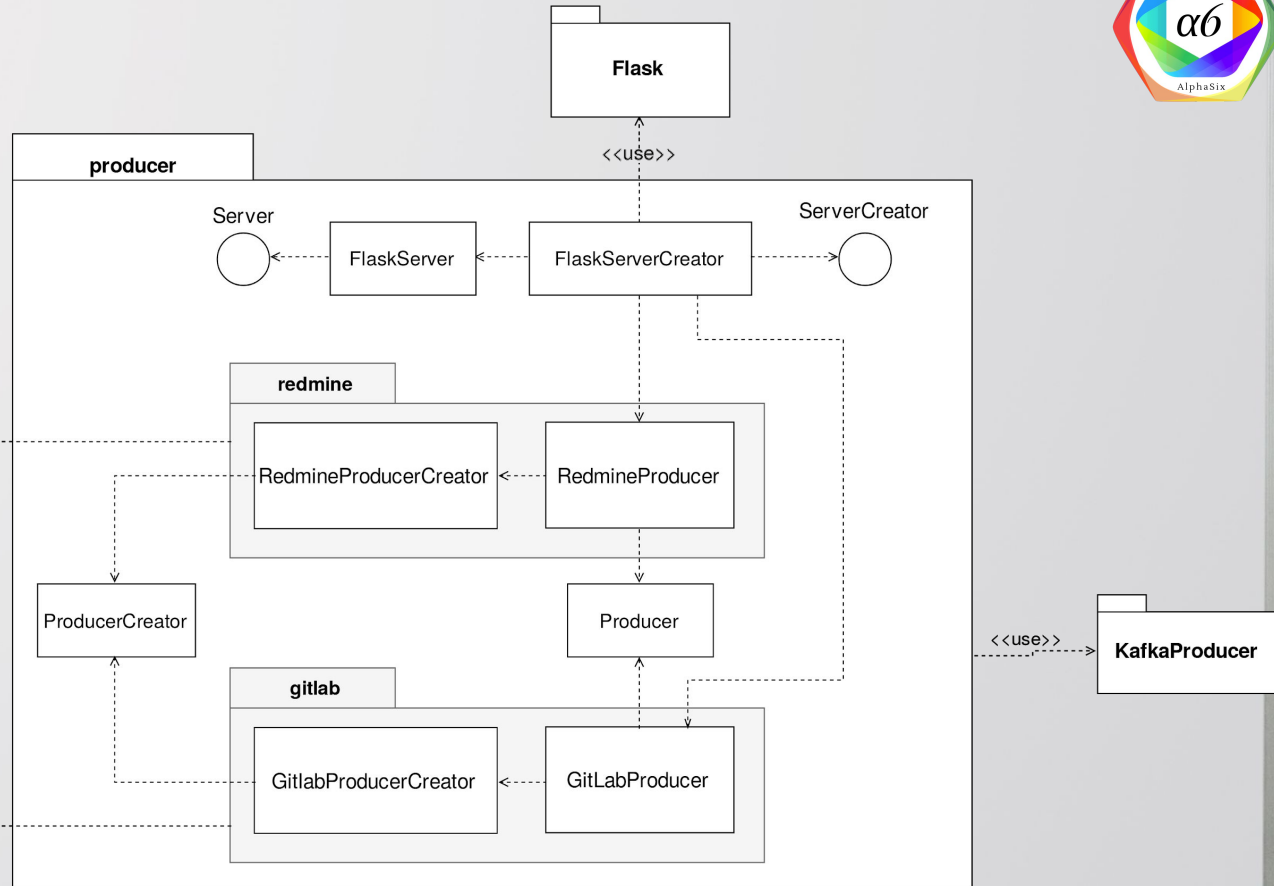
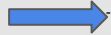


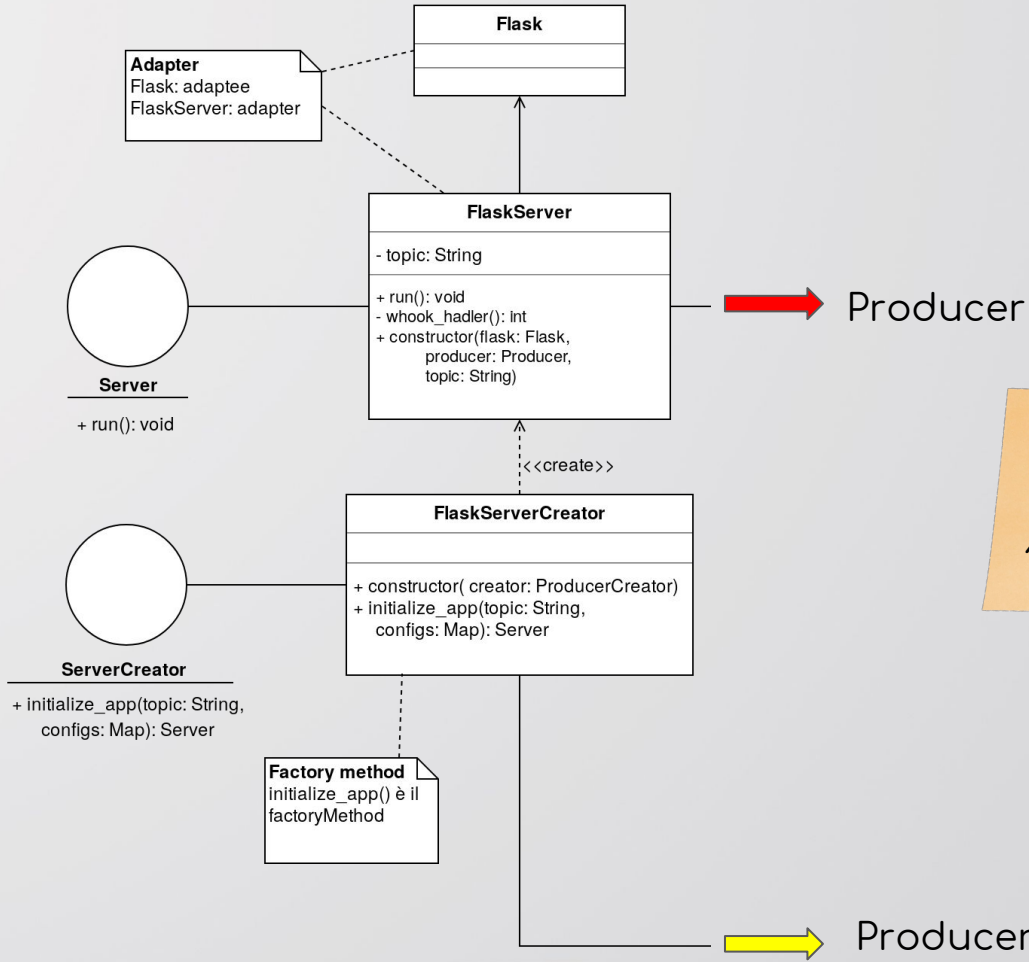
Diagramma
Package

Webhook
GitLab





PRODUCER



Design Pattern:
ADAPTER

Diagramma
Classi



FlaskServer
Creator



PRODUCER

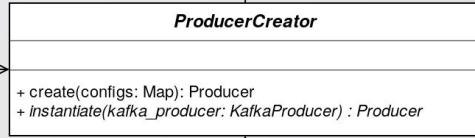
RedmineProducer



GitLabProducer

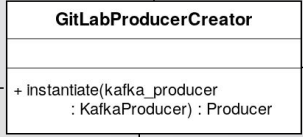
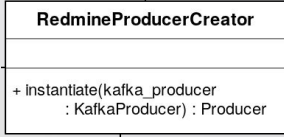


Factory method
instantiate() è il
factoryMethod



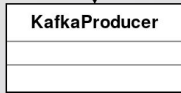
<<create>>

Crea KafkaProducer che
viene passato al costruttore
di Producer



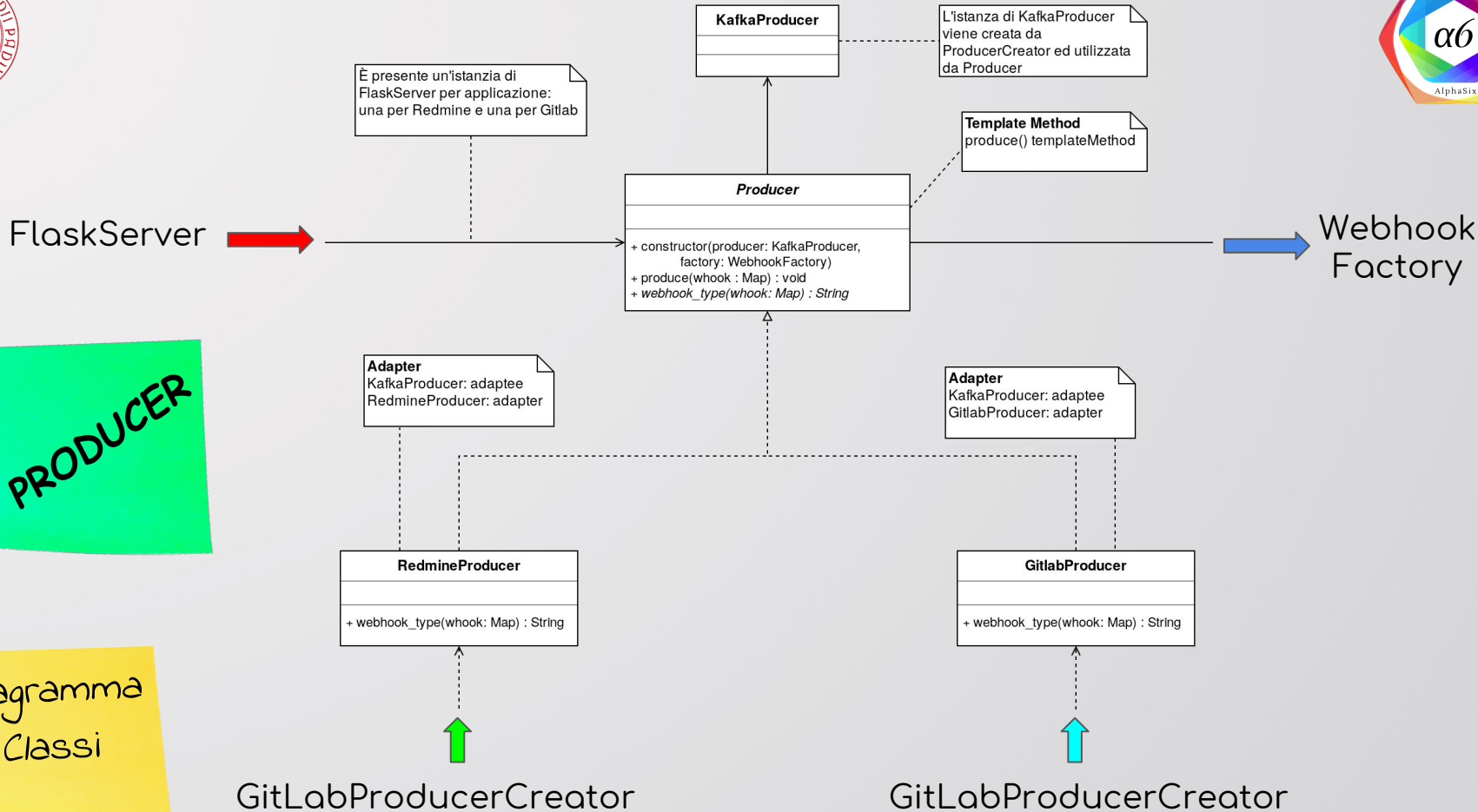
<<create>>

<<create>>



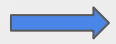
Importato dalla libreria di
kafka-python. Di KafkaProducer
si utilizza il metodo send()

Diagramma
Classi

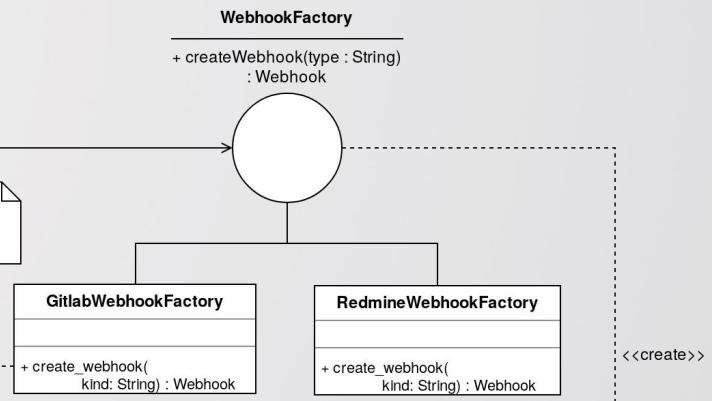




Producer

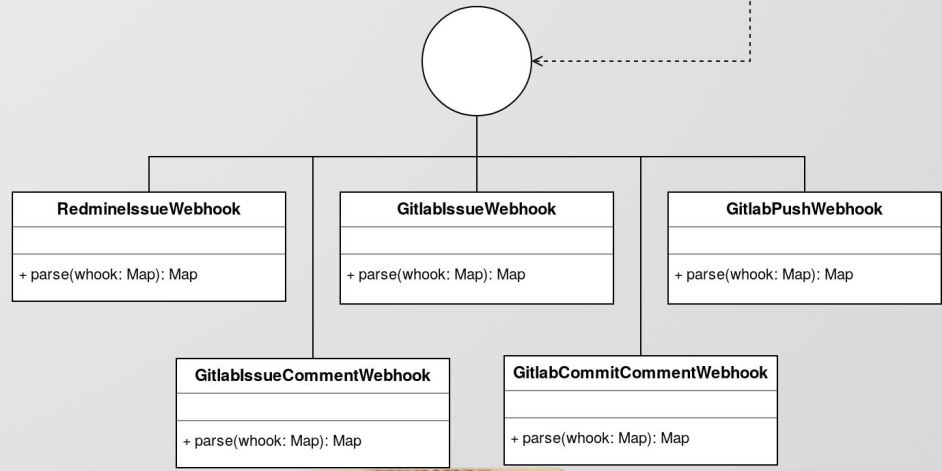


kind: 'issue', 'push',
'note-issue'...
Ottenuti dal campo
'object_kind'



<<create>>

Webhook
+ parse(whook: Map) : Map



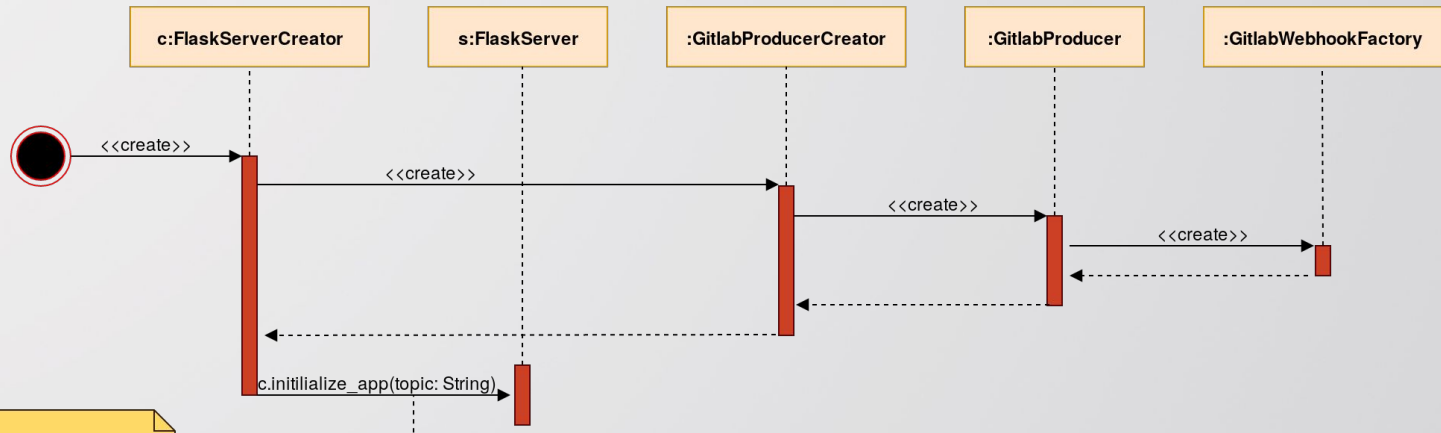
PRODUCER

Design
Pattern:
ABSTRACT
FACTORY

Diagramma
Classi



PRODUCER



topic='gitlab'
 initialize_app chiama il metodo s.run()

Diagramma sequenza

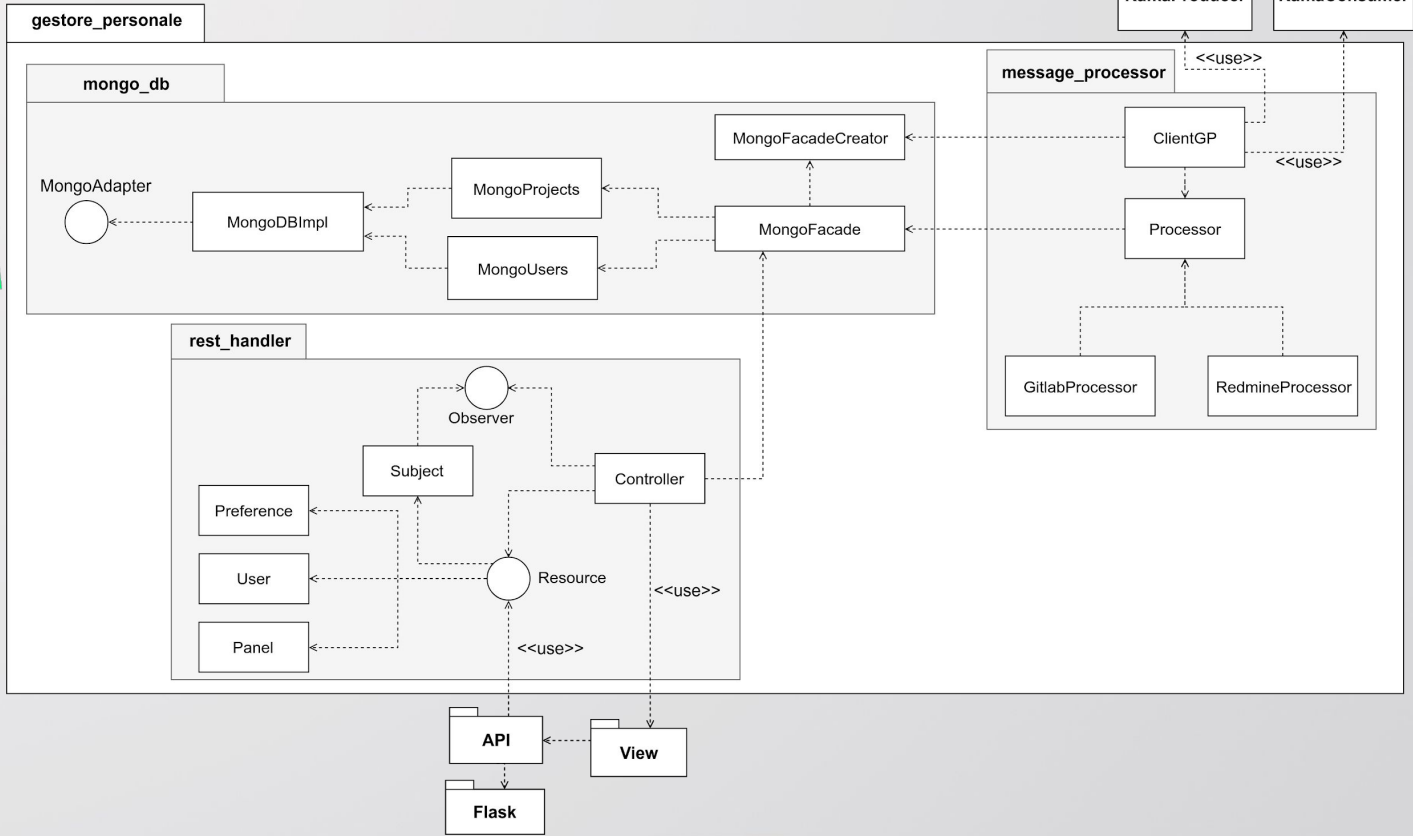
```

topic = 'gitlab'
creator = FlaskServerCreator(GitlabProducerCreator())
app = creator.initialize_app(topic)
app.run()
  
```



GESTORE PERSONALE

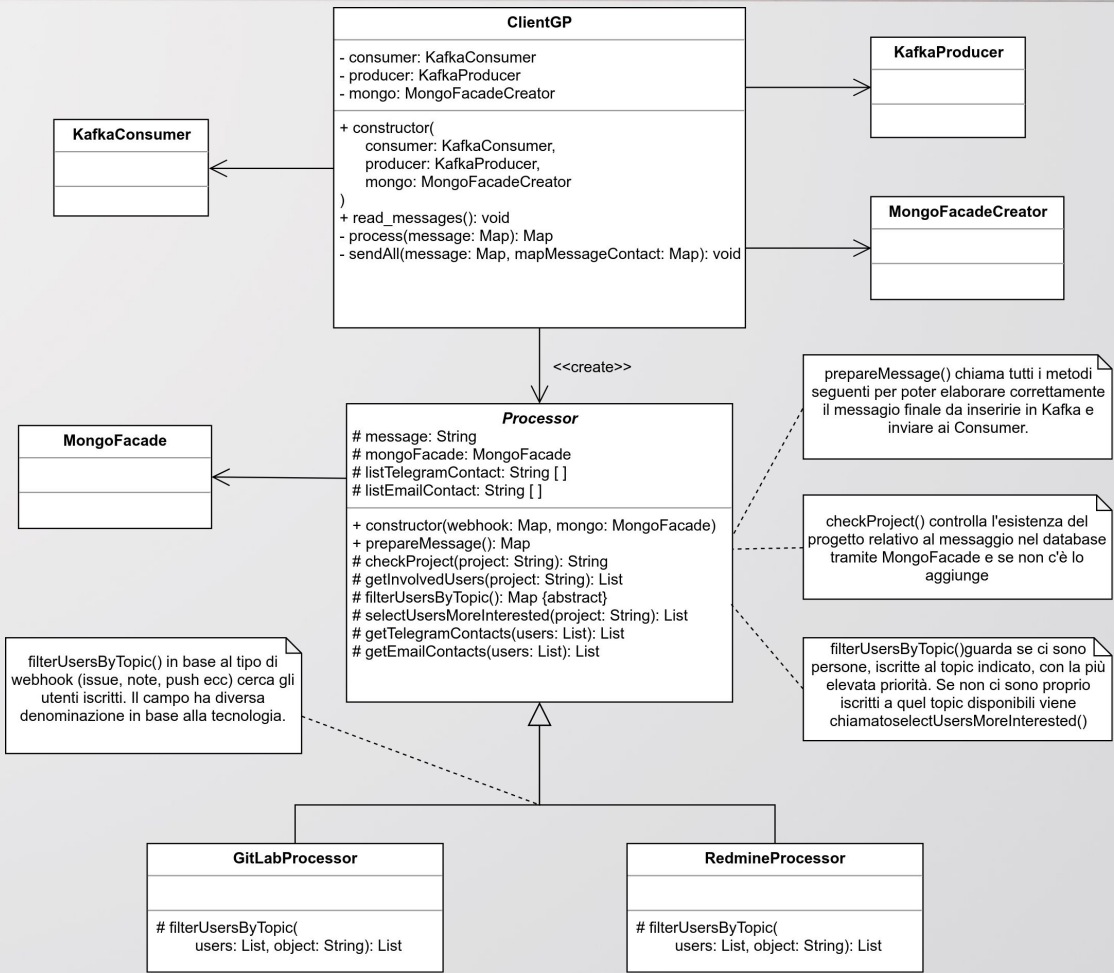
Diagramma Package





GESTORE
PERSONALE

Diagramma
Classi



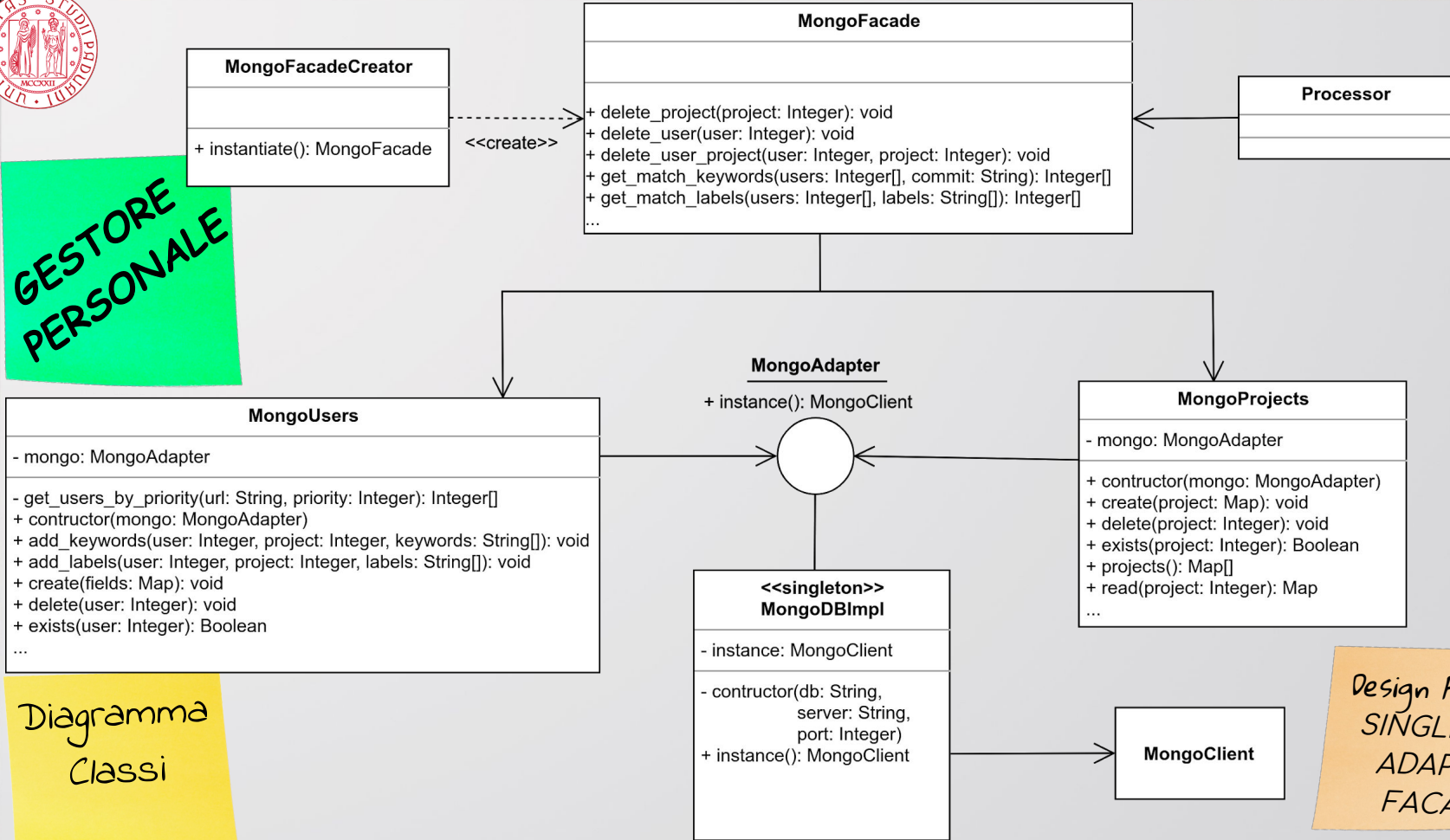
Design
Pattern:
TEMPLATE
METHOD



GESTORE PERSONALE

Diagramma Classi

Design Pattern: SINGLETON, ADAPTER, FACADE



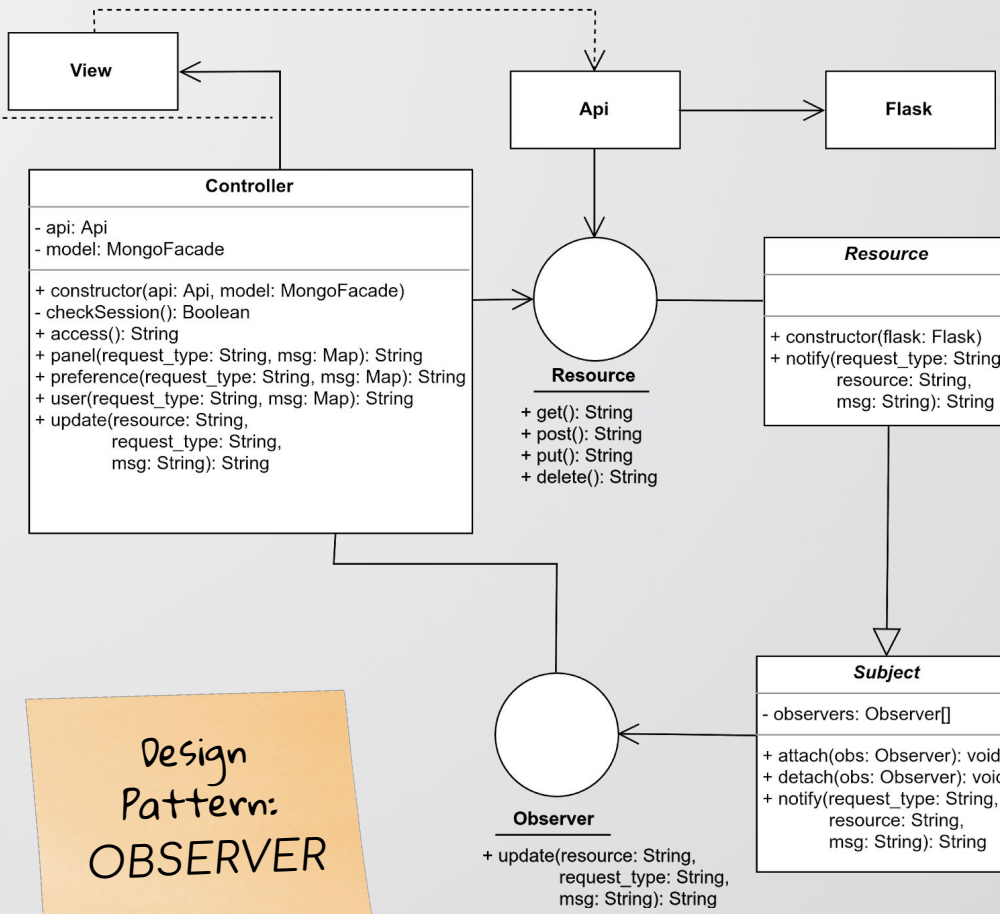


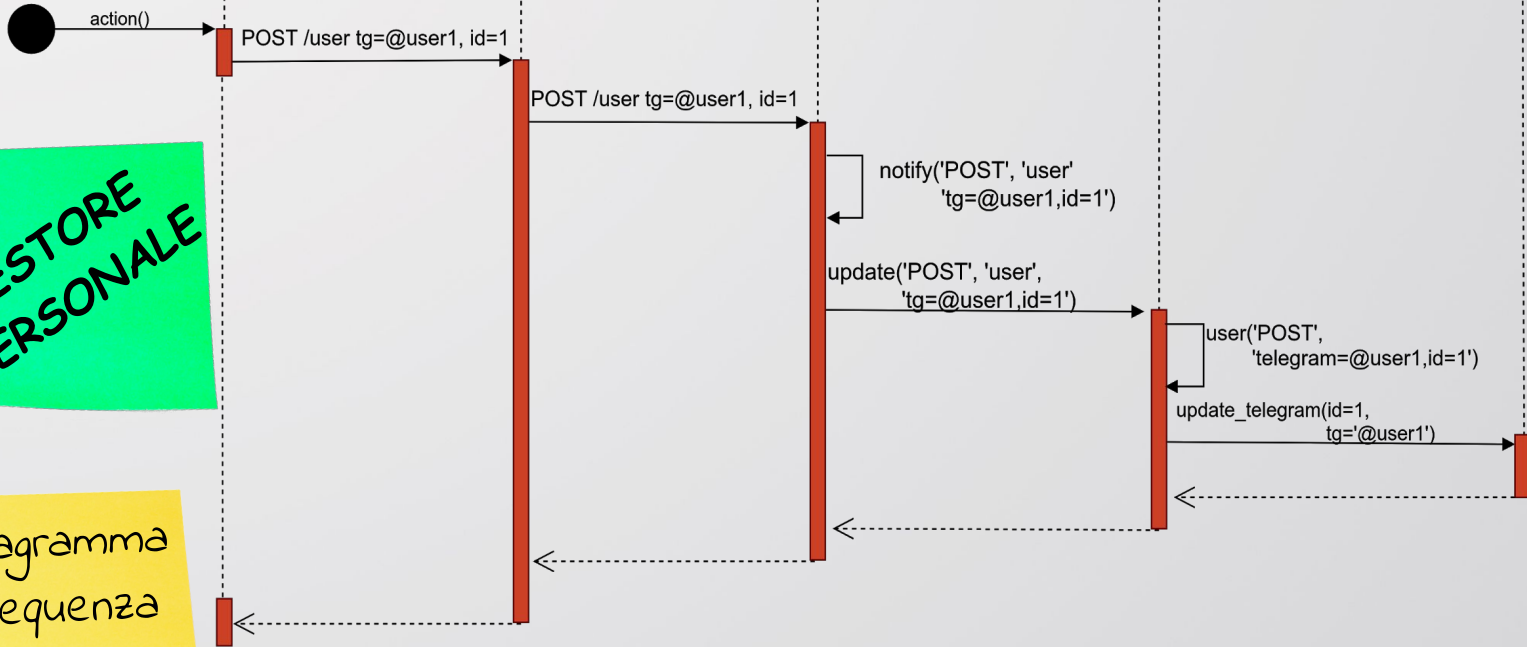
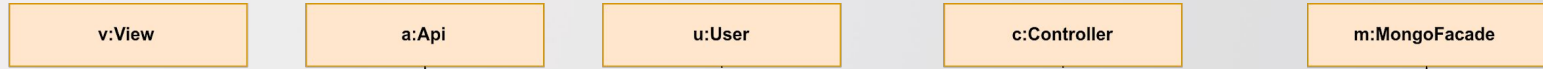
La View è in HTML

GESTORE PERSONALE

Diagramma Classi

Design Pattern: OBSERVER





GESTORE
PERSONALE

Diagramma
sequenza



CONSUMER

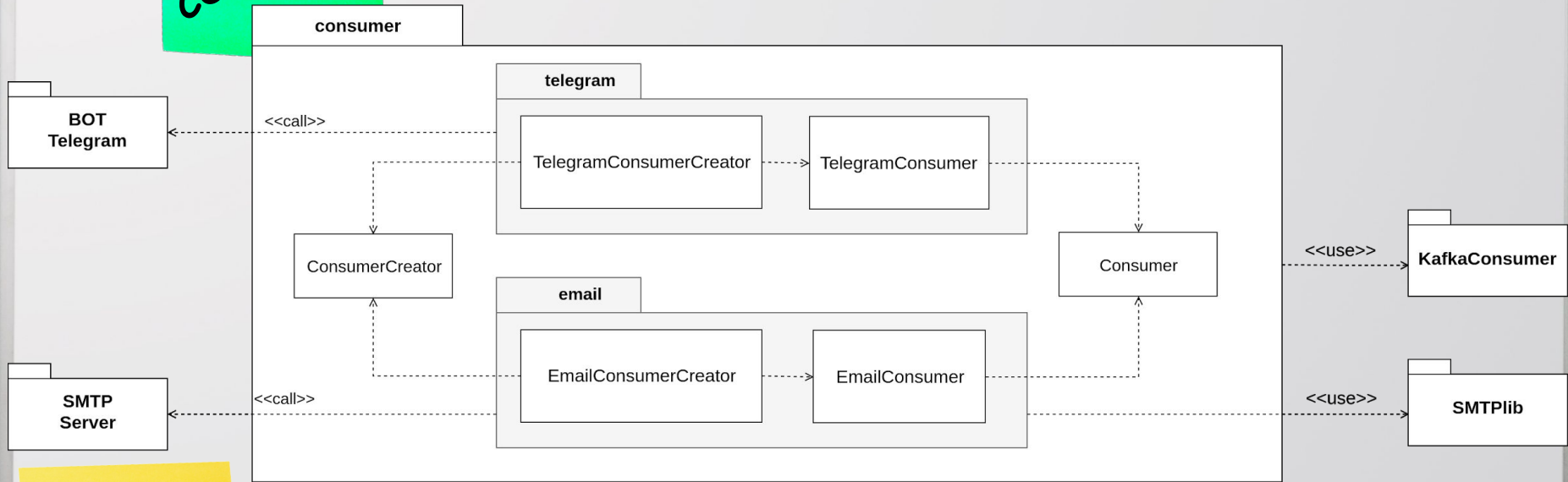


Diagramma
Classi



CONSUMER

Design Pattern: TEMPLATE METHOD

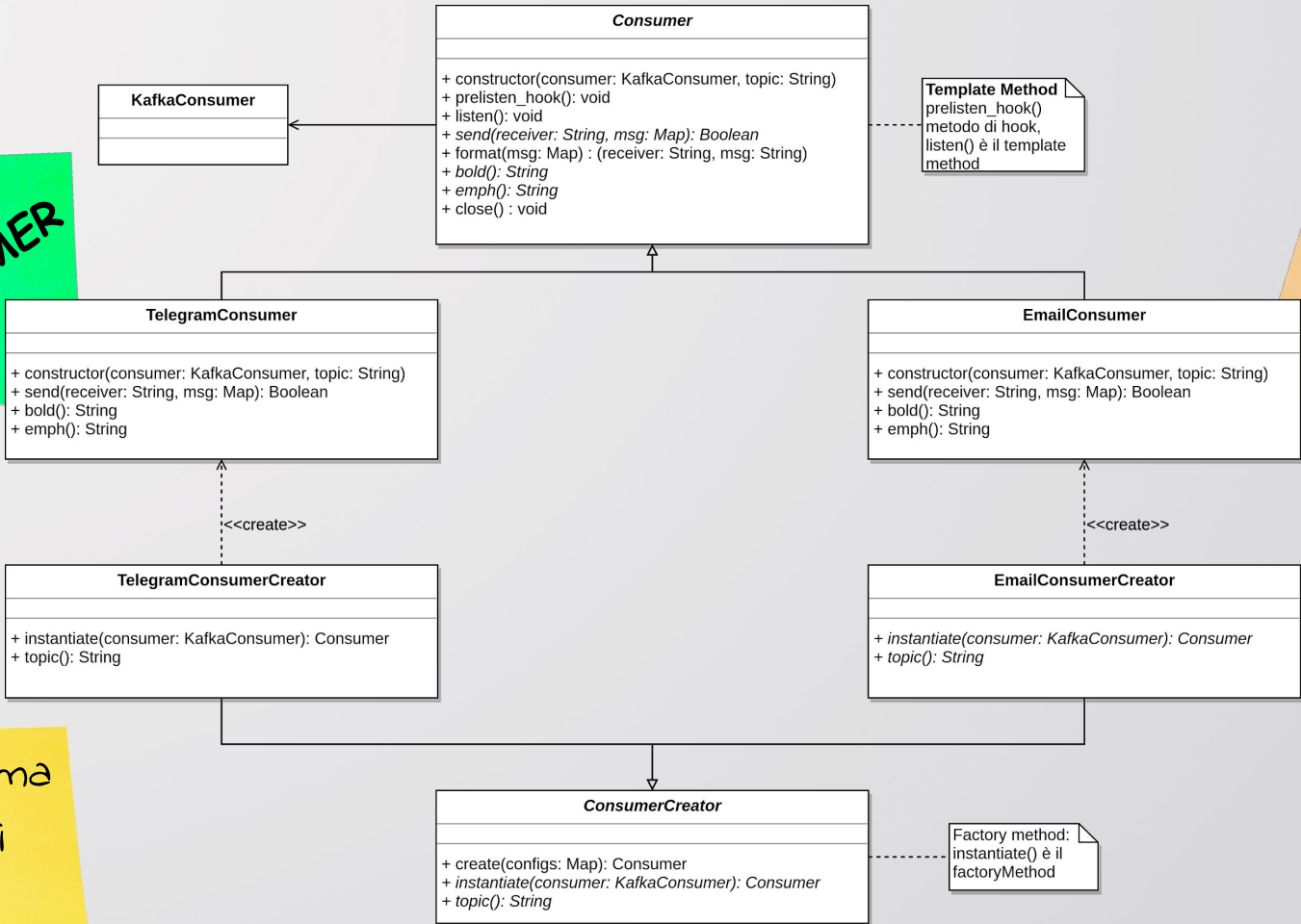
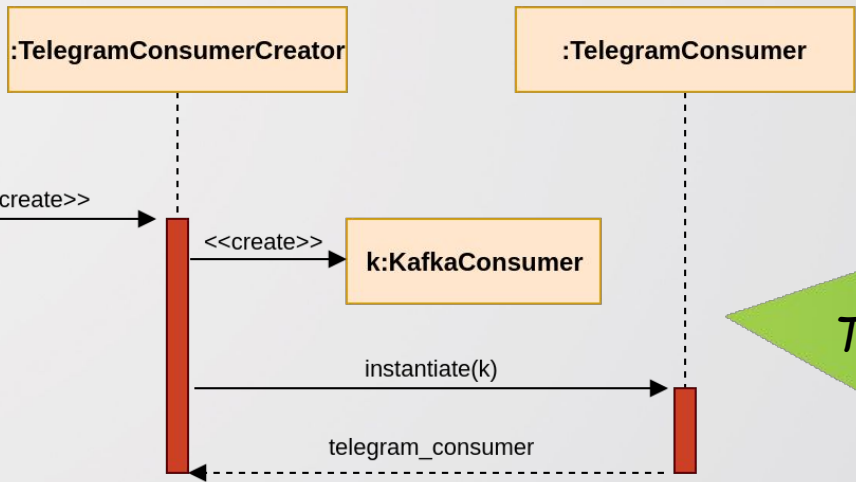


Diagramma Classi

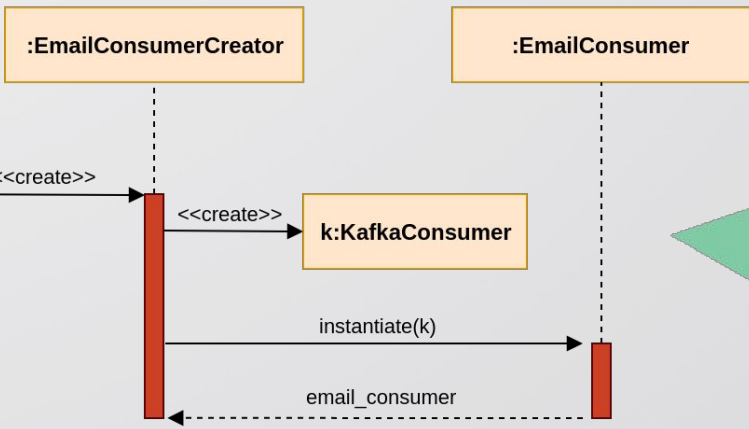


CONSUMER

Diagrammi
sequenza



TelegramConsumerCreator

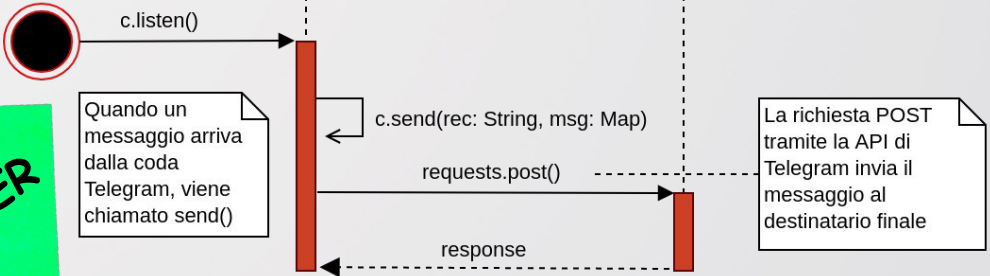


EmailConsumerCreator



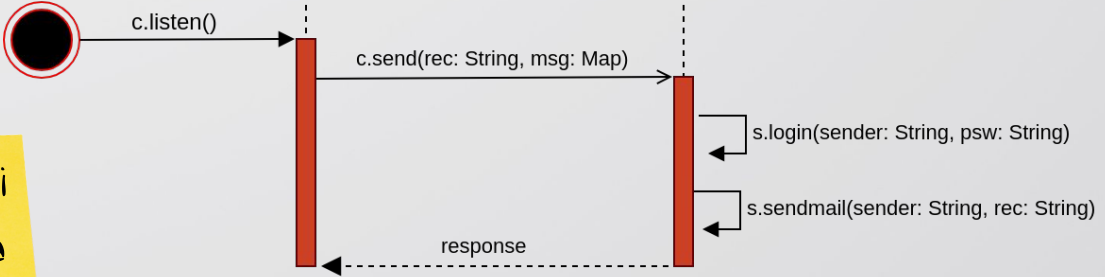
CONSUMER

c:TelegramConsumer **<<class>> requests**



TelegramConsumer

c:EmailConsumer **s:SMTP**



EmailConsumer

Diagrammi Sequenza



Riepilogo Design Pattern

Creazionali

FACTORY
METHOD

SINGLETON

ABSTRACT
FACTORY

FACADE

ADAPTER

Strutturali

Comportamentali

OBSERVER

TEMPLATE
METHOD

MVC

DEPENDENCY
INJECTION

Architetturali



Alcuni principi OOP

Composition
over
inheritance

Single
responsibility

Dependency
inversion



➤ *“The object-oriented version of spaghetti code is, of course, ‘lasagna code’. Too many layers.”*

~ Roberto Waltman